



Utility Tracker Workshop

Session 4

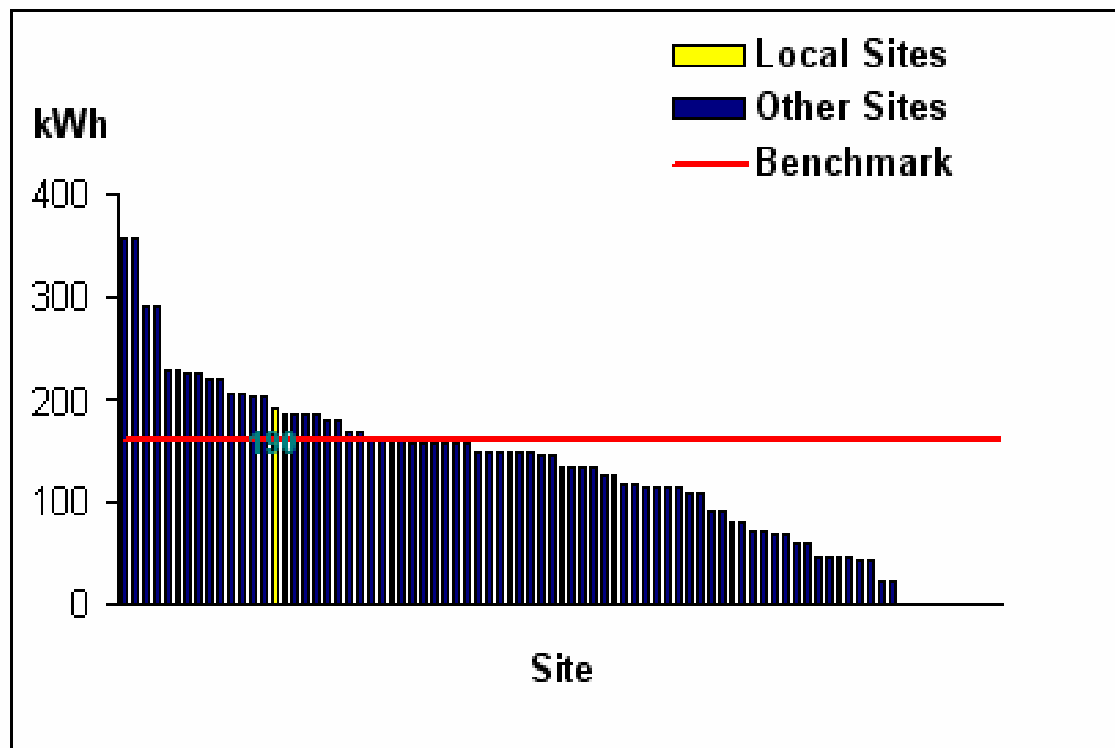
Benchmarking



What is a Benchmark?

- > A starting point
- > A useful tool when developing targets
- > Enables identification of sites with savings potential

Consumption/Area (m²)



Site	kWh/Area (m ²)
Office Corporate Centre Royal Avenue Sandringham	190.00

Benchmarking Aims

- > To provide useful and easily applied performance indicators for facilities & operations
- > To identify partnership opportunities for saving energy in local governments facilities
- > To assist local governments to use this information strategically in the development of an Energy Management Plan
- > To promote dialogue between State Govt & Local Govts



Benchmarking Reports

Benchmarking - Electricity Cost

Electricity Cost Benchmarking 2002 Calendar Year

[Back](#)

[Consumption](#)

[Print](#)

[Help ?](#)

[Home](#)

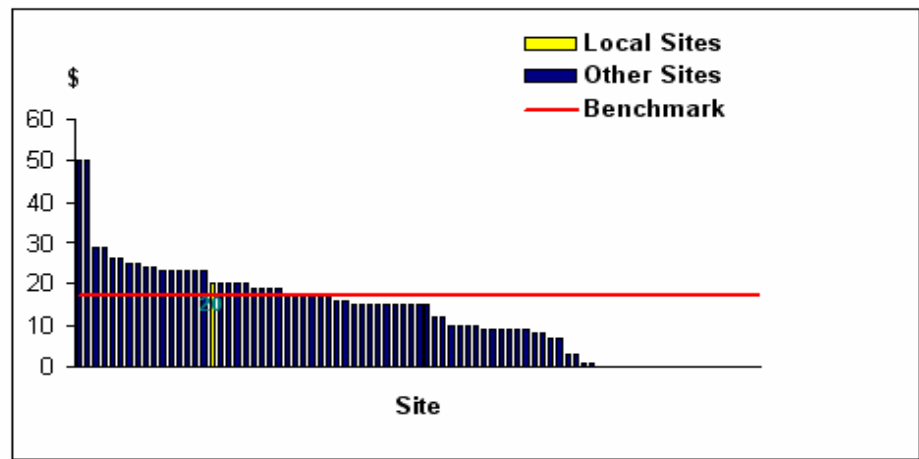
Office Accommodation Sites

Change Years

Local Sites Only

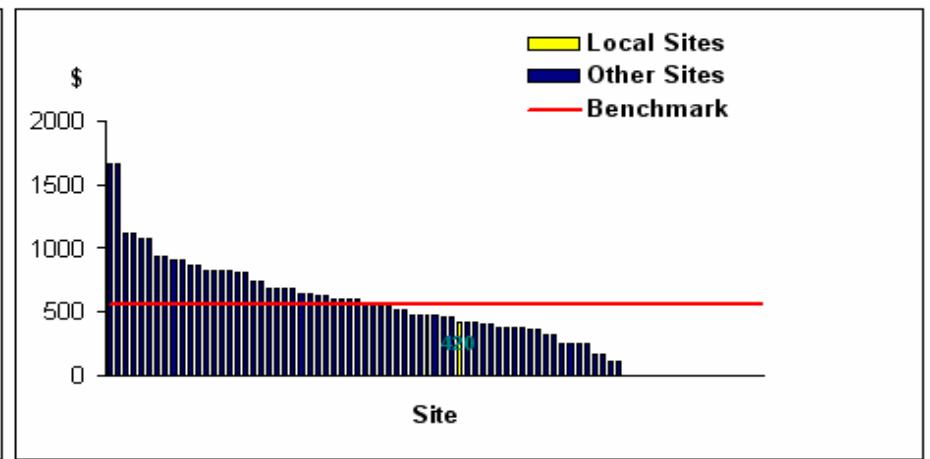


Cost/Area (m²)



Site	Cost/Area (m ²)
Office Corporate Centre Royal Avenue Sandringham	\$20.00

Cost/Staff Member



Site	Cost/unit
Office Corporate Centre Royal Avenue Sandringham	\$420.00



Data Transfer

The screenshot shows a web interface titled "Data Transfer" for Bayside City Council. The header includes the Sustainable Energy Authority Victoria logo. A dropdown menu is open, listing the following options: "Import Billing Data", "Export Benchmarking Data", "Export CCP Data", "Import MEMTool data", and "Import Benchmark Data". Navigation buttons for "Back", "Help", and "Home" are visible. An "OK" button and a "Send" button are also present.

> Can Import and Export benchmark data annually

Benchmarking Process

- > LGovts receiving UT to provide Benchmark data to SEAV Oct – Dec 04
- > SEAV to analyse data to produce updated Benchmarks Jan 05
- > SEAV to provide all UT users with updated Benchmarks Feb 05
- > Annual process



Benchmarking beyond energy

- > Benchmarks aid in monitoring progress,
 - e.g. CVGA Zero Emissions Target
 - Vic Govt 15% energy reduction target in energy per area (MJ/m²)
- > Can be used as design tool for new buildings
- > General trend to benchmarks for total sustainability, e.g. green star, SEAM (UK)

Assessment Credits

Energy

Pollution

Transport

Materials

Water

Land Use and Ecology

Indoor Environment Quality

Management

Innovation



Category Scores



Environmental Weightings



Single Score



Green Star Rating

