



Utility Tracker Workshop

Session 2

UT Inputs

What information is needed to perform

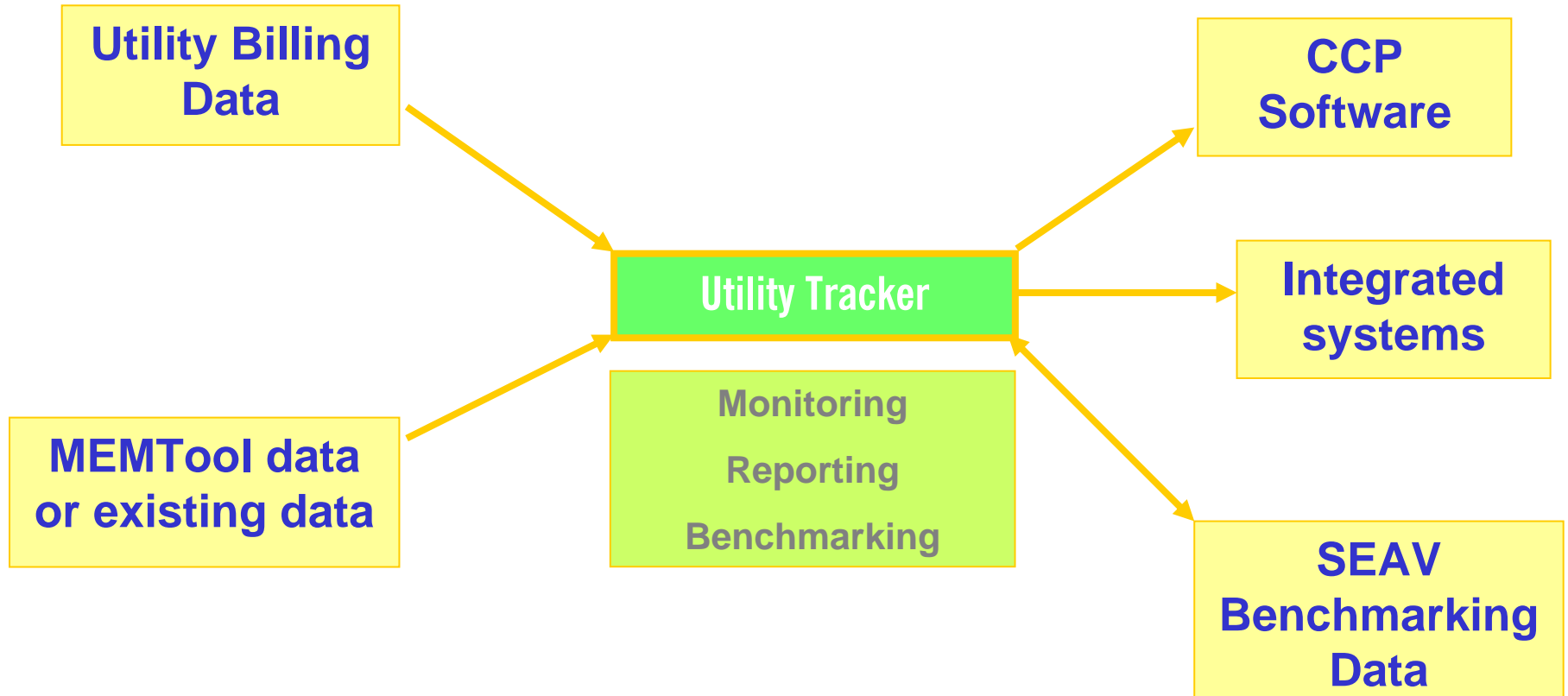


New Improvements

- > **Open Source** - now allows councils to extend on the generic product to include customised modules.
- > Ability to track & monitor water consumption – **sustainability** management, not just energy
- > Easier Data Transfer
- > Incorporates Benchmarking Strategy
- > More relevant reporting
- > Compatible with CCP Program

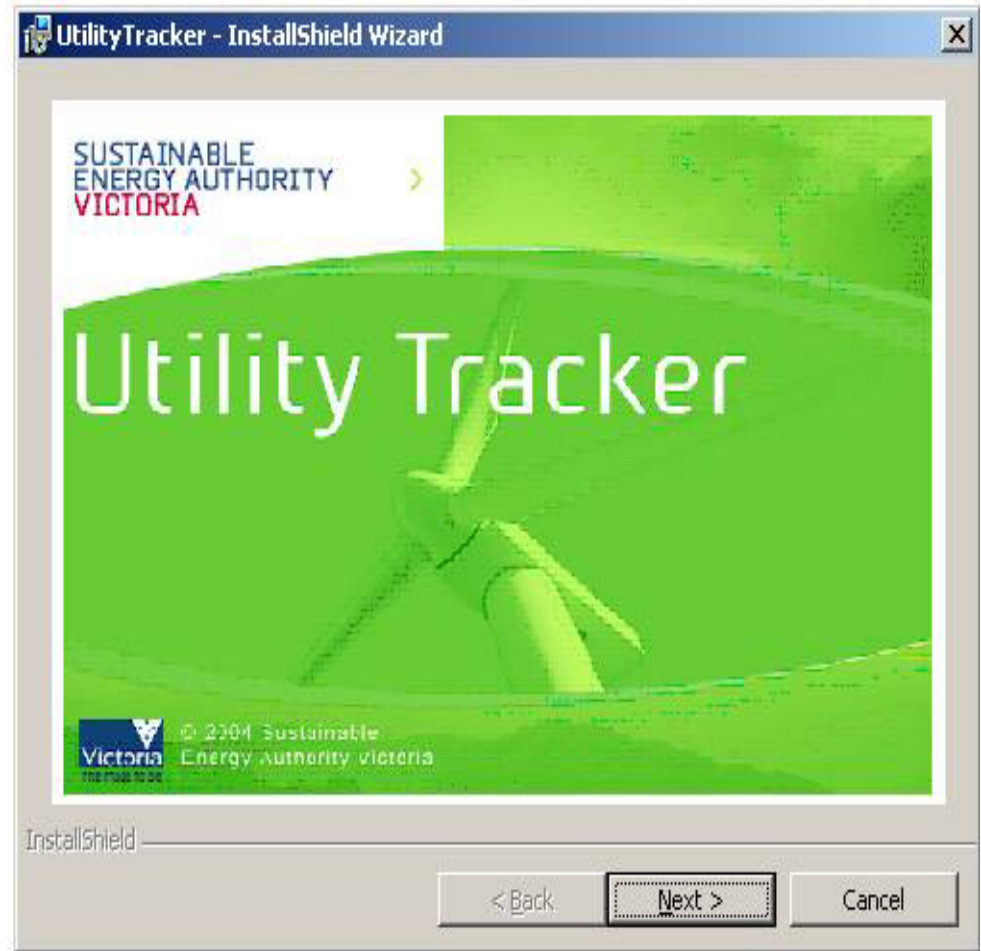


UT Data Inputs & Outputs



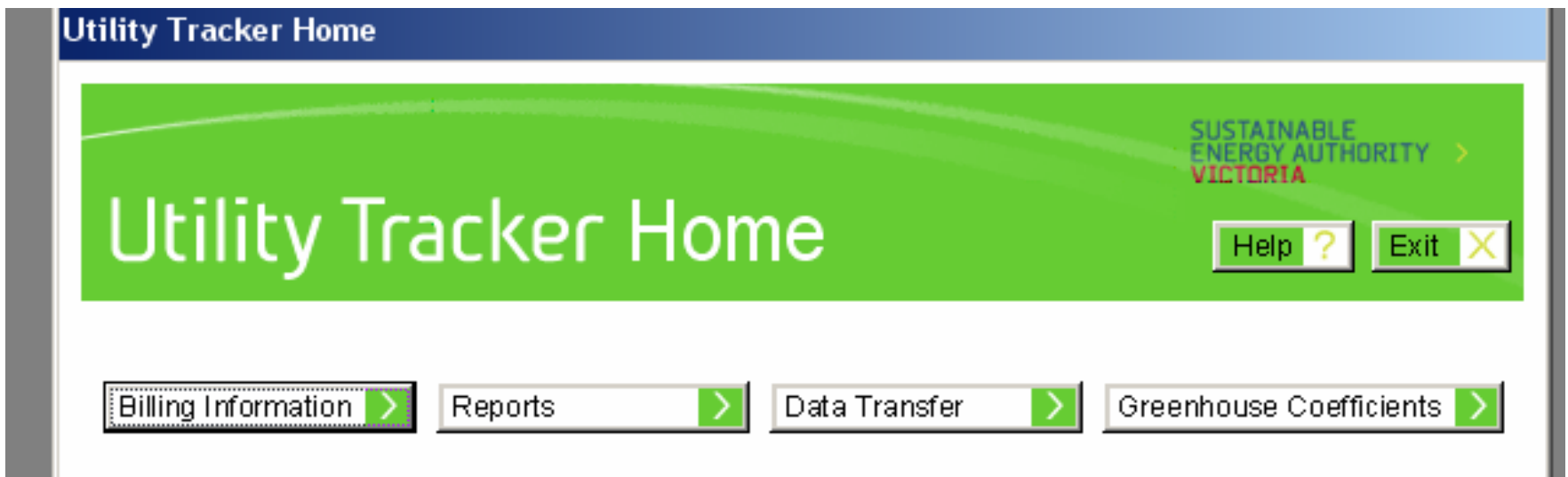
Installation

- > Requires MS Access 97 or 2000
- > Must accept Licence Agreement
- > Install Wizard stores Access file on local hard drive
- > Not currently compatible with Macs



Home

- > Billing Information
- > Reports
- > Data Transfer
- > Greenhouse Coefficients



Profiling Your Facilities

- > Before entering billing data, setup the
 - Site Details
 - Vehicles
 - Streetlighting
- > How much do you know about them?

Billing Information

Billing Information: Bayside City Council

SUSTAINABLE ENERGY AUTHORITY VICTORIA

Back Help Home

Invoices

Electricity Gas Water Oil

Vehicles Street Lighting

Setup

Site Details Vehicles Street Lighting

Billing Data

The screenshot shows a web interface for selecting an electricity account. At the top, there is a blue header with the text 'Select Electricity Account'. Below this is a green banner with the same text and the logo for 'SUSTAINABLE ENERGY AUTHORITY VICTORIA'. Navigation buttons for 'Back', 'Help', and 'Home' are present. The main content area has two dropdown menus: 'Select site by Name:' with 'Library Sandringham' selected, and 'Select an account number:' with '950238789420' selected. A 'Find' button is to the right of the first dropdown. Below the dropdowns are two buttons: 'Add Electricity Bill' and 'View/Edit Billing History'.

- > Once Site Details are entered, use **Invoices** to enter billing data, via Billing Info / Invoices

Billing Data

Add new electricity bill

Add New Electricity Bill

SUSTAINABLE ENERGY AUTHORITY VICTORIA

Back Account History Help ? Home

Library Sandringham

Account Number lib 950238789420

Date of Bill (End of billing period)	<input type="text"/>	Actual Demand (kVA)	<input type="text" value="0"/>
Number of Billing Days	<input type="text" value="0"/>	Network Demand (kVA)	<input type="text" value="0"/>
Tariff Code	<input type="text"/>	Total Cost (\$)	<input type="text" value="\$0.00"/>
Peak Consumption (kWh)	<input type="text" value="0"/>	Demand Unit	<input type="text" value="kVA"/>
Off Peak consumption (kWh)	<input type="text" value="0"/>	Description	<input type="text"/>
Total Consumption (kWh)	<input type="text" value="0"/>		

Average Daily Consumption 0 kWh/day

OK Cancel

Enter Billing Data

Electricity Billing History

Electricity Billing History

Back Help Home

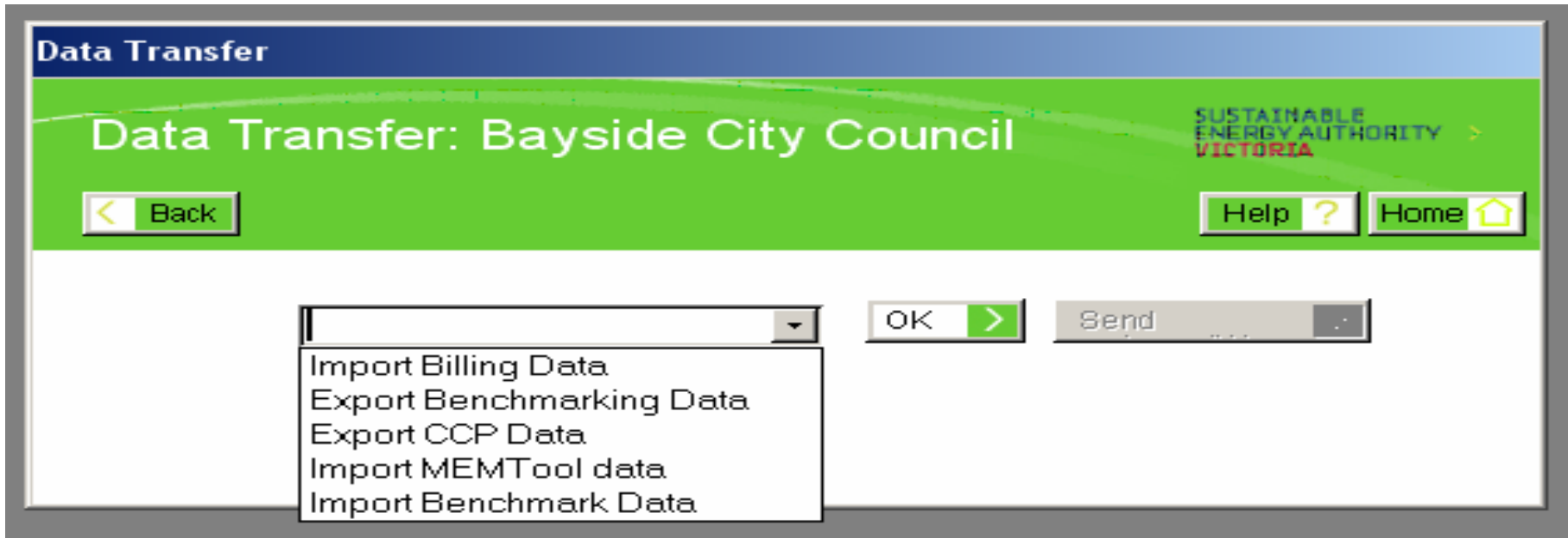
Library Sandringham Account Number lib 950238789420

[kW/kVA]

Date of Bill	Number of Billing Days	Tariff Code	Peak Consumption	Off Peak Consumption	Actual Demand (kVA)	Contract Demand (kVA)	Total Consumption	Total Cost	kWh/day	Comments
20/02/1998	23	E1E2	4940	530			5470	\$987.15	238	
23/05/1997	25	E1E2	3890	700			4590	\$819.80	184	
22/12/2000	25	E1E2	6500	740			7240	\$1,237.42	290	
26/07/1995	26	E1E2	4950	1200			6150	\$1,075.10	237	
23/12/1997	27	E1E2	5110	750			5860	\$1,028.80	217	
25/02/1997	27	E1E2	5920	740			6660	\$1,197.75	247	
24/02/2000	28	E1E2	6100	720			6820	\$1,163.48	244	
25/05/1998	28	E1E2	5160	1240			6400	\$1,058.20	229	
28/05/1996	28	E1E2	2890	600			3490	\$629.05	125	

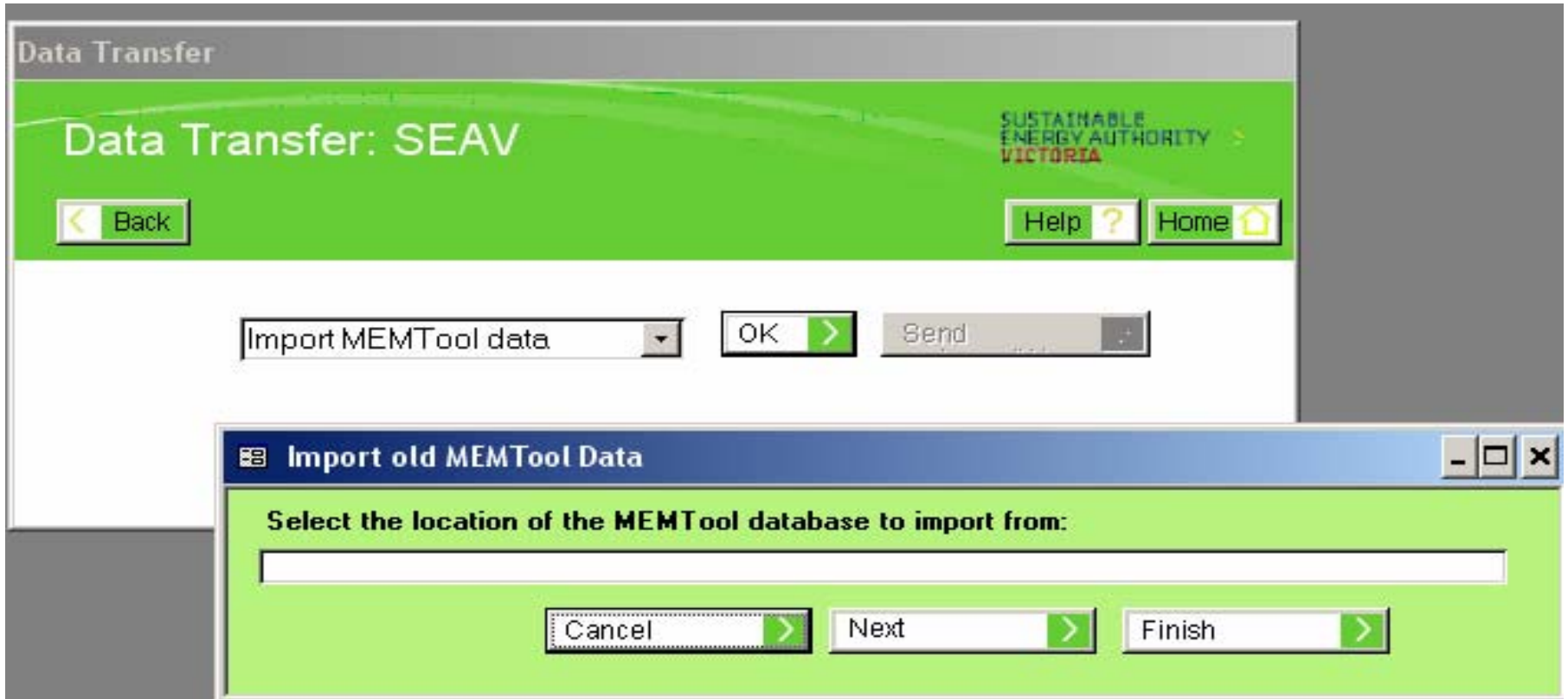
Add New Bill Edit Data

Data Transfer



- > Manual data entry via input forms for
 - Electricity (incl Green Power), gas, water, oil, vehicle fuel
- > **OR**, Import directly into data tables via **Data Transfer**

Data Transfer



- > Can also import MEMTool data or new benchmark data

Requesting Energy Data

- > On request, electricity or gas retailer must provide historical billing data for any period nominated up to previous 2 years free of charge
- > A charge may be applied if :
 - data extends beyond previous 2 years
 - more than one request in previous 12 months
 - retailer has changed
- > Establish contact with retailer
- > Retailer must attempt to provide data within 10 working days

Greenhouse Coefficients

Energy Coefficients

SUSTAINABLE ENERGY AUTHORITY VICTORIA

Energy Coefficient

Back Help Home

Energy Conversion Greenhouse Coefficient Reset All Reset Current Record

Fuel	Unit	MJ/qty	Default	GHkg/MJ	Default	Last modified	Modified by
Auto LPG	litre	25.2000	25.2000	0.0594	0.0594	26/11/2003 11:21:21 AM	Admin
Briquettes	kg	22.1000	22.1000	0.0103	0.0103	26/11/2003 11:22:00 AM	Admin
Diesel	litre	38.6000	38.6000	0.0749	0.0749	26/11/2003 11:22:20 AM	Admin
Electricity	kWh	3.6000	3.6000	0.3810	0.3810		
Gas	MJ	1.0000	1.0000	0.0513	0.0513		
Heating oil	litre	40.8000	40.8000	0.0788	0.0788		
LPG	litre	25.2000	25.2000	0.0594	0.0594		
Petrol	litre	34.2000	34.2000	0.0713	0.0713		

> These can updated annually from AGO figures